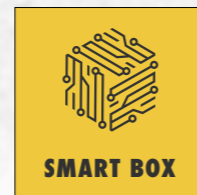
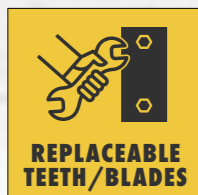
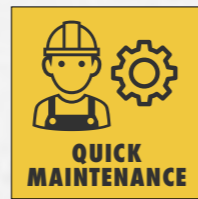
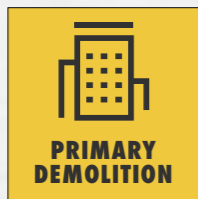




# SG LINE

## SORTING GRAPPLES





# SGR

## ROTATING GRAPPLE

### HANDLING AND DEMOLITION



The **reinforced body structure** and double cylinder hydraulic system allows the use of the SGR for heavy tasks such as demolition of brick buildings.



Quick handling of demolition residues, rock blocks, tree trunks. Equipped with a load lock valve that prevents the valve from opening without operator control.



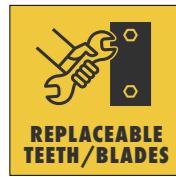
The **new hydraulic system** improves performance and durability, simplifying maintenance operations.



**New Parker® twin motors** with **new pressure valve** equipped on heavier models\*  
\* Starting from SGR1000



Real-time tracking of equipment performance.



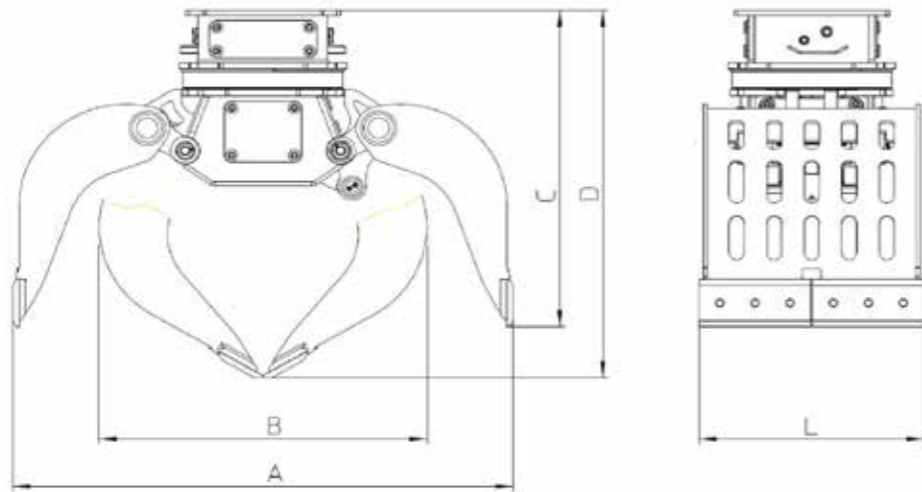
Interchangeable standard blades can be turned twice before replacement.

Blades kit and side closing kit are available for specific jobs.

**New toothed blades** designed to grip and handle boulders.



**New side closure** designed to increase load capacity and improves handling of small materials.



**NEW**



Four leg kits available to fit the job required.

**SGR**

**Grilled bottom leg kit**



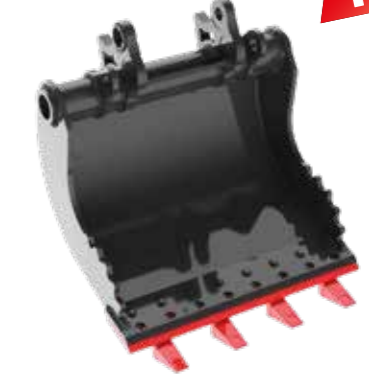
**Ribbed bottom leg kit**



**Closed bottom leg kit**



**Rock leg kit**



**NEW**

**NEW**

DATA SHEETS

BT SGR150-2700 04  
RIF 97876-16/E 04/21 REV02

MODEL		SGR200	SGR300	SGR450	SGR600	SGR850	SGR900
EXCAVATOR WEIGHT	t	1,5-3	3-6	5-8	7-11	10-15	14-17
TOOL WEIGHT*	kg	180	320	565	750	860	1030
CAPACITY	l	50	100	200	300	400	500
A	mm	910	1100	1500	1650	1700	1915
B	mm	625	715	1030	1090	1100	1220
C	mm	760	805	1100	1130	1140	1220
D	mm	830	915	1240	1310	1340	1430
L	mm	400	500	600	600	800	900
HYDRAULIC WORKING PRESSURE	bar	200-250	200-250	200-250	250-300	300-320	300-350
OIL FLOW	l/min	5-8	10-15	20-30	20-30	20-30	50-60

SGR1000	SGR1100	SGR1200	SGR1500	SGR1900	SGR2500	SGR2700	SGR3000
14-18	16-20	18-22	21-25	25-30	30-35	35-40	40-50
1330	1400	1480	1570	2260	2520	2570	3300
500	600	700	800	900	1000	1100	1350
2000	2000	2000	2100	2230	2240	2240	2450
1300	1300	1300	1430	1400	1420	1455	1578
1340	1340	1340	1370	1490	1500	1500	1565
1550	1550	1550	1600	1745	1770	1770	1854
750	900	1000	1000	1200	1300	1350	1500
300-350	300-350	300-350	300-350	300-350	300-350	300-350	300-350
50-60	50-60	50-60	50-60	70-80	70-80	70-80	100-120

\* Tool weight does include Mantovanibenne top bracket.



# SG

## FIXED GRAPPLE

**FAST AND ACCURATE**



The **reinforced body structure** and double cylinder hydraulic system allows the use of the SGR for heavy tasks such as demolition of brick buildings.



**Quick handling** of demolition residues, rock blocks, tree trunks. Equipped with a load lock valve that prevents the valve from opening without operator control.

The legs can be customized with a closed, gridded or ribbed bottom.

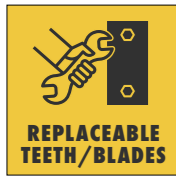


The **new hydraulic system** improves performance and durability, simplifying maintenance operations



Real-time tracking of equipment performance.





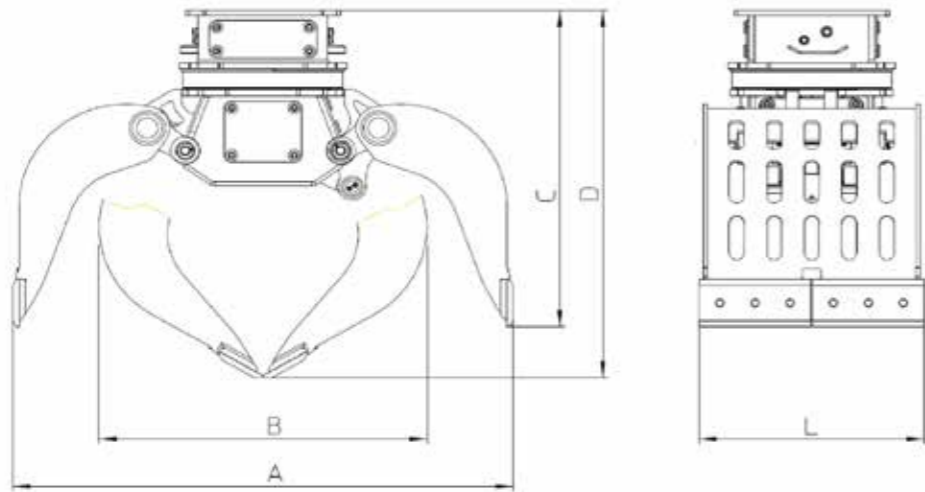
Interchangeable standard blades can be turned twice before replacement.

Blades kit and side closing kit are available for specific jobs.

**New toothed blades** designed to grip and handle boulders.



**New side closure** designed to increase load capacity and improves handling of small materials.



**NEW**

MODEL		SG450	SG600	SG850	SG900	SG1000
EXCAVATOR WEIGHT	t	5-8	7-11	10-15	14-17	14-18
TOOL WEIGHT**	kg	410	555	665	815	910
CAPACITY	l	200	300	400	500	500
A	mm	1500	1650	1700	1915	2000
B	mm	1030	1090	1100	1220	1300
C	mm	810	865	880	915	1000
D	mm	950	1050	1050	1125	1215
L	mm	600	600	800	900	750
HYDRAULIC WORKING PRESSURE	bar	200-250	250-300	300-320	300-350	300-350
OIL FLOW	l/min	20-30	20-30	20-30	50-60	50-60



Four leg kits available to fit the job required.

SG

**Grilled bottom leg kit**



**Ribbed bottom leg kit**



**Closed bottom leg kit**



**Rock leg kit**



**NEW**

SG1100	SG1200	SG1500	SG1900	SG2500	SG2700	SG3000
16-20	18-22	21-25	25-30	30-35	35-40	40-50
980	1055	1142	1720	1980	2030	2650
600	700	800	900	1000	1100	1350
2000	2000	2100	2230	2240	2240	2450
1300	1300	1430	1400	1420	1455	1578
1000	1000	1030	1120	1120	1120	1165
1215	1215	1270	1370	1370	1370	1495
900	1000	1000	1200	1300	1350	1500
300-350	300-350	300-350	300-350	300-350	300-350	300-350
50-60	50-60	50-60	70-80	70-80	70-80	70-80

\* Tool weight does include Mantovanibenne top bracket.

DATA SHEETS

BT\_SGR150-2700\_04  
RIF\_97876-16/E\_04/21\_REV02