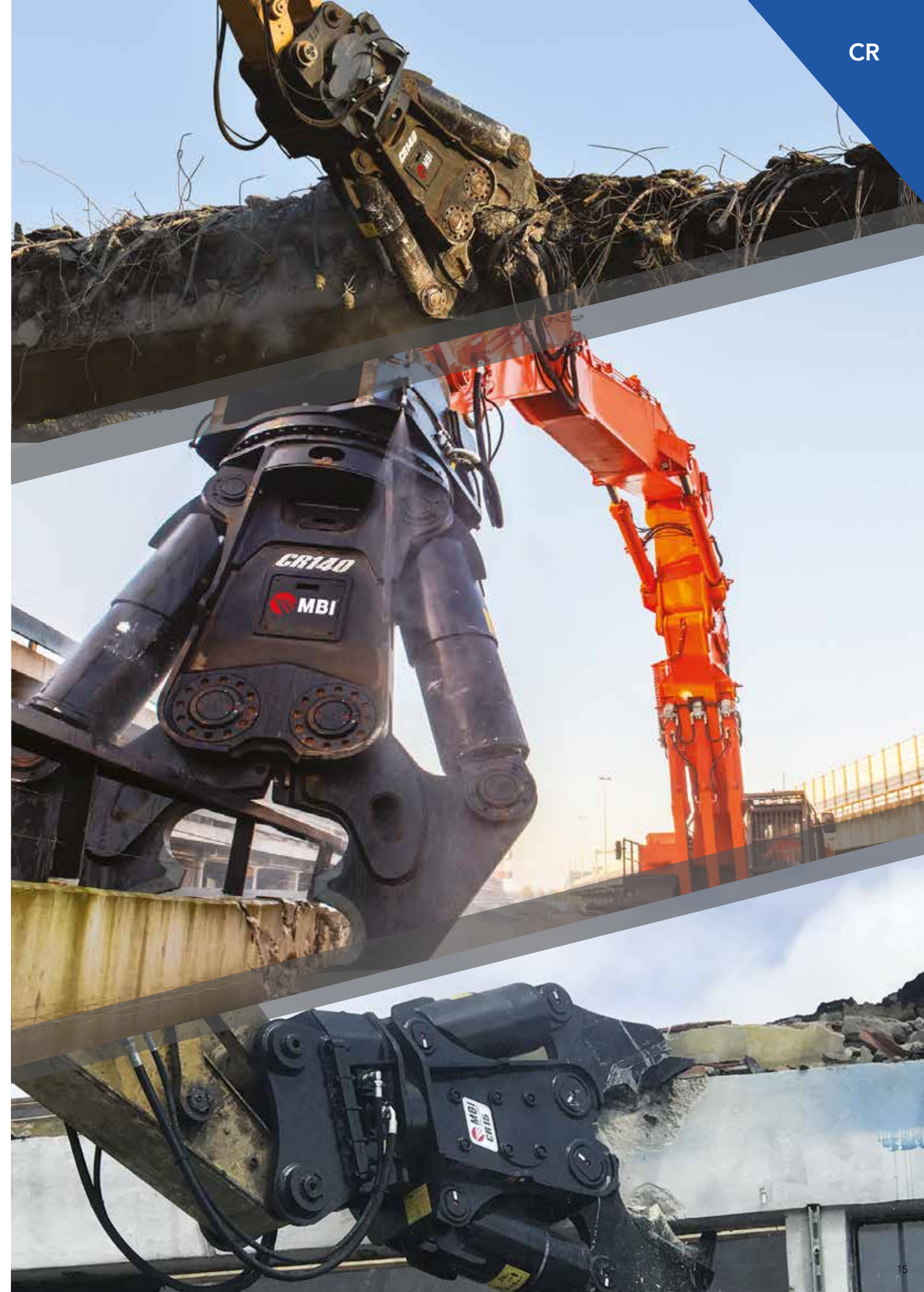
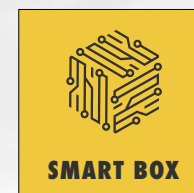
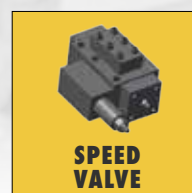
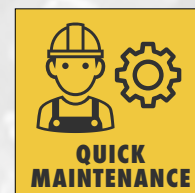
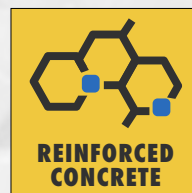
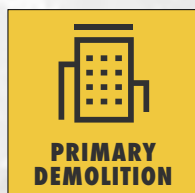




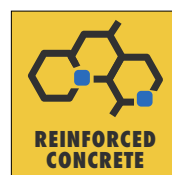
CR

CRUSHER

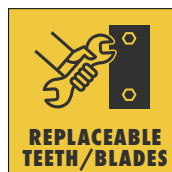




The **specific tooth profile**, studied to remain sharp despite wear, maximizes penetration.



The **twin-pin system** enables a larger opening and higher power, even at maximum opening.



4-sided usable cutting edges before replacement. Optional **interchangeable teeth**.



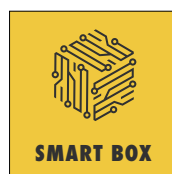
The continuous **hydraulic rotation** enables precise positioning in high reach demolition and the double-row thrust bearing ensures high robustness and increases safety.



The **Speed-Valve** improves productivity and protects the hydraulic system from pressure peaks.

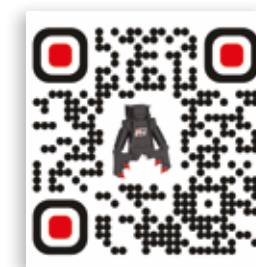


The **quick and easy routine maintenance** allows to reduce intervention times and costs.



Real-time tracking of equipment performance.

MAXIMUM POWER FOR PRIMARY DEMOLITION



Video at work

MODEL		CR2	CR4	CR5
ROTATION		Mechanical		
EXCAVATOR WEIGHT	t	03-05	03-06	06-10
TOOL WEIGHT *	kg	240	320	530
OPENING	mm	360/0	440/0	450/0
HEIGHT	mm	1070	1070	1290
HYDRAULIC WORKING PRESSURE	bar	180-220	250	200-250
OIL FLOW	l/min	30-50	65	50-90

CR5R	CR15R	CR20R	CR26R	CR40R	CR60R	CR80R	CR100R	CR120R
360° Hydraulic								
07-11	16-20	21-26	27-35	45-55	60-70	75-95	100-120	120-140
630	1600	2100	2800	4720	6250	8250	11000	12000
450/0	800/0	1050/0	1100/0	1350/0	1580/0	1800/0	2050/0	2310/320
1315	1800	2030	2200	2800	3020	3400	3200	3300
200-250	280-320	280-320	280-320	280-320	320-350	320-350	320-350	320-350
50-90	130-150	180-220	220-250	250-300	500-600	500-600	600-800	600-800

* Tool weight does include Mantovanibenne top bracket.