



# SD

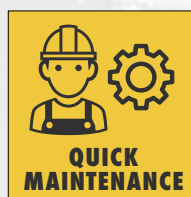
## SHEAR DISMANTLER



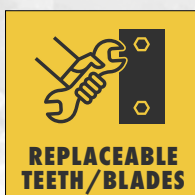
SECONDARY  
DEMOLITION



IRON  
STEEL



QUICK  
MAINTENANCE



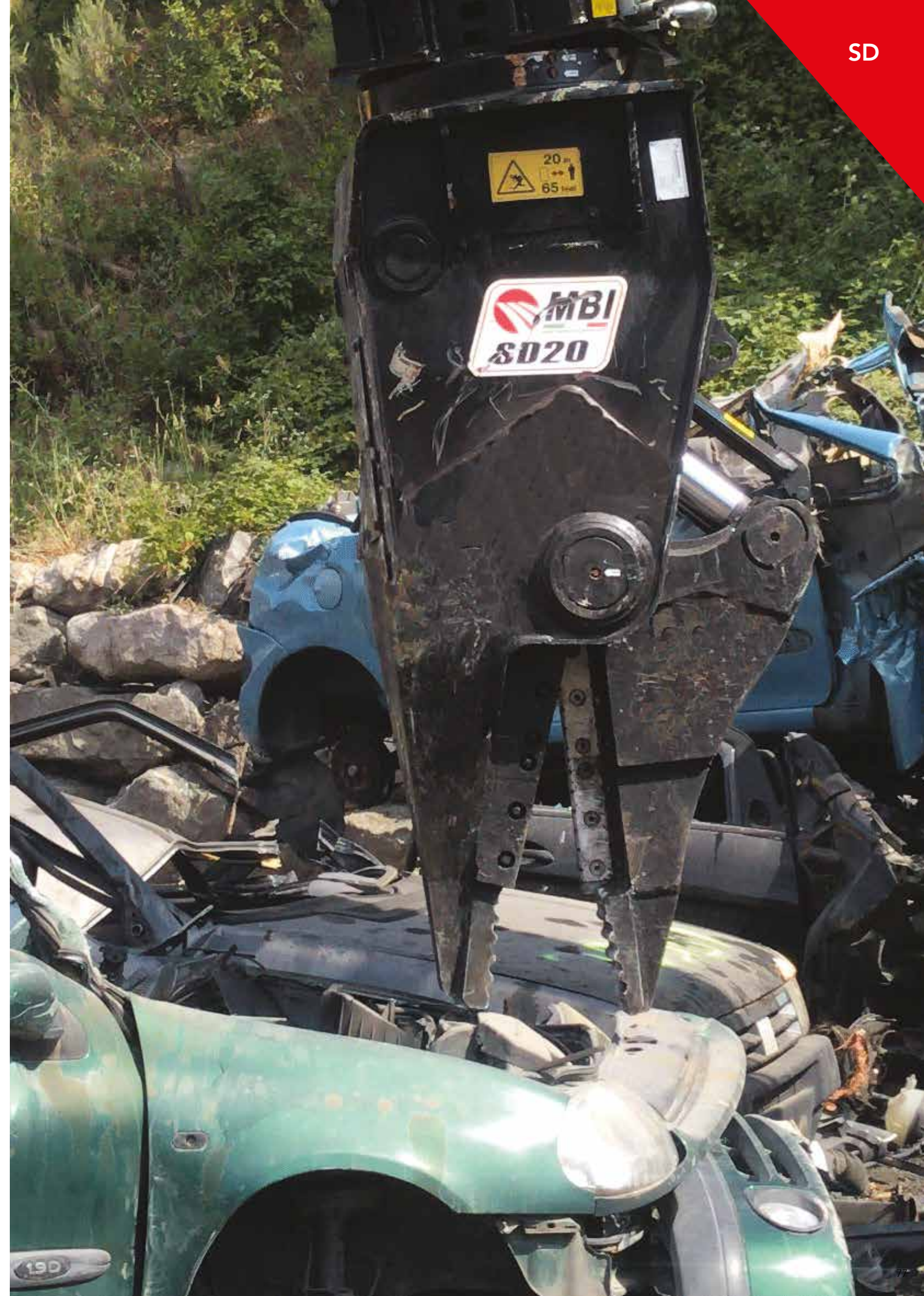
REPLACEABLE  
TEETH/BLADES



HYDRAULIC  
ROTATION



SMART BOX



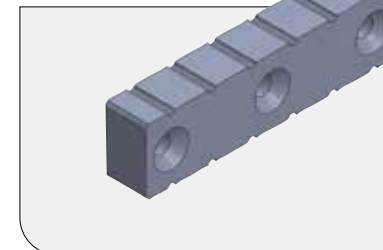


# EXTRACTION AND SCRAPPING

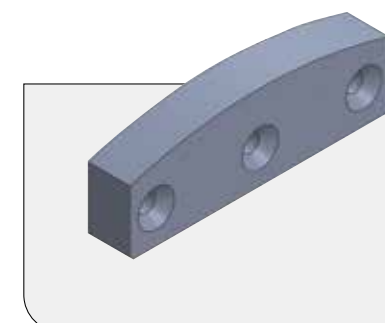


Video at work

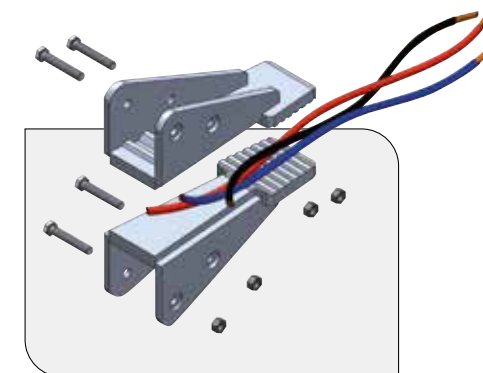
## OPTIONAL



STANDARD BLADE



WIRE-CUTTING BLADE



WIRE PADS



SECONDARY  
DEMOLITION

The specific design allows the jaws to dissect, cut and extract the items of value for recycling.



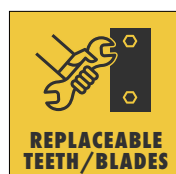
IRON  
STEEL

Designed to work on vehicle wrecks, it can demolish materials such as iron, plastic and rubber.



HYDRAULIC  
ROTATION

The continuous hydraulic rotation enables precise positioning and the double-row thrust bearing ensures high robustness and increases safety.



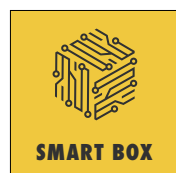
REPLACEABLE  
TEETH/BLADES

The long and straight blades allow **precise cuts**. All the blades are interchangeable and can be turned three times before replacement.



QUICK  
MAINTENANCE

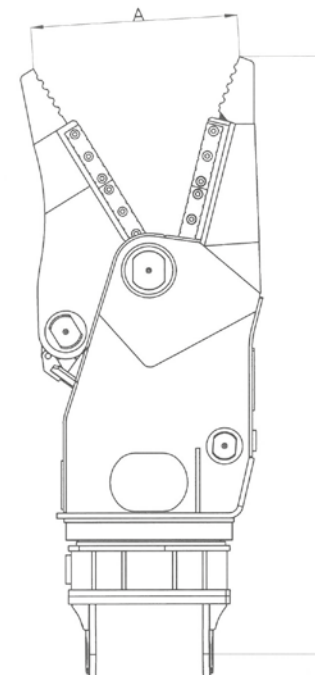
The **quick and easy routine maintenance** allows to reduce intervention times and costs.



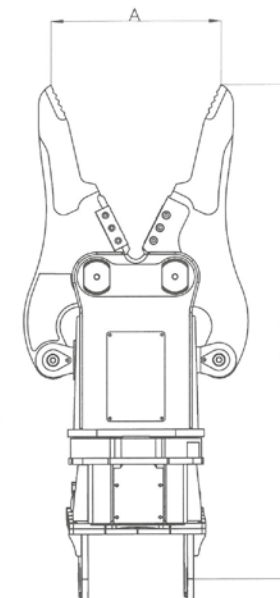
SMART BOX

Real-time tracking of equipment performance.

MODEL **SD20**



MODEL **SD12**



DATA SHEETS

MODEL		SD12	SD20
EXCAVATOR WEIGHT	t	10-18	18-26
TOOL WEIGHT *	kg	950	1760
OPENING	mm	700	795
HEIGHT	mm	1800	2100
WORKING PRESSURE	bar	200-250	300-350
OIL FLOW	l/min	60-100	180-200

\* Tool weight does include Mantovanibenne top bracket.